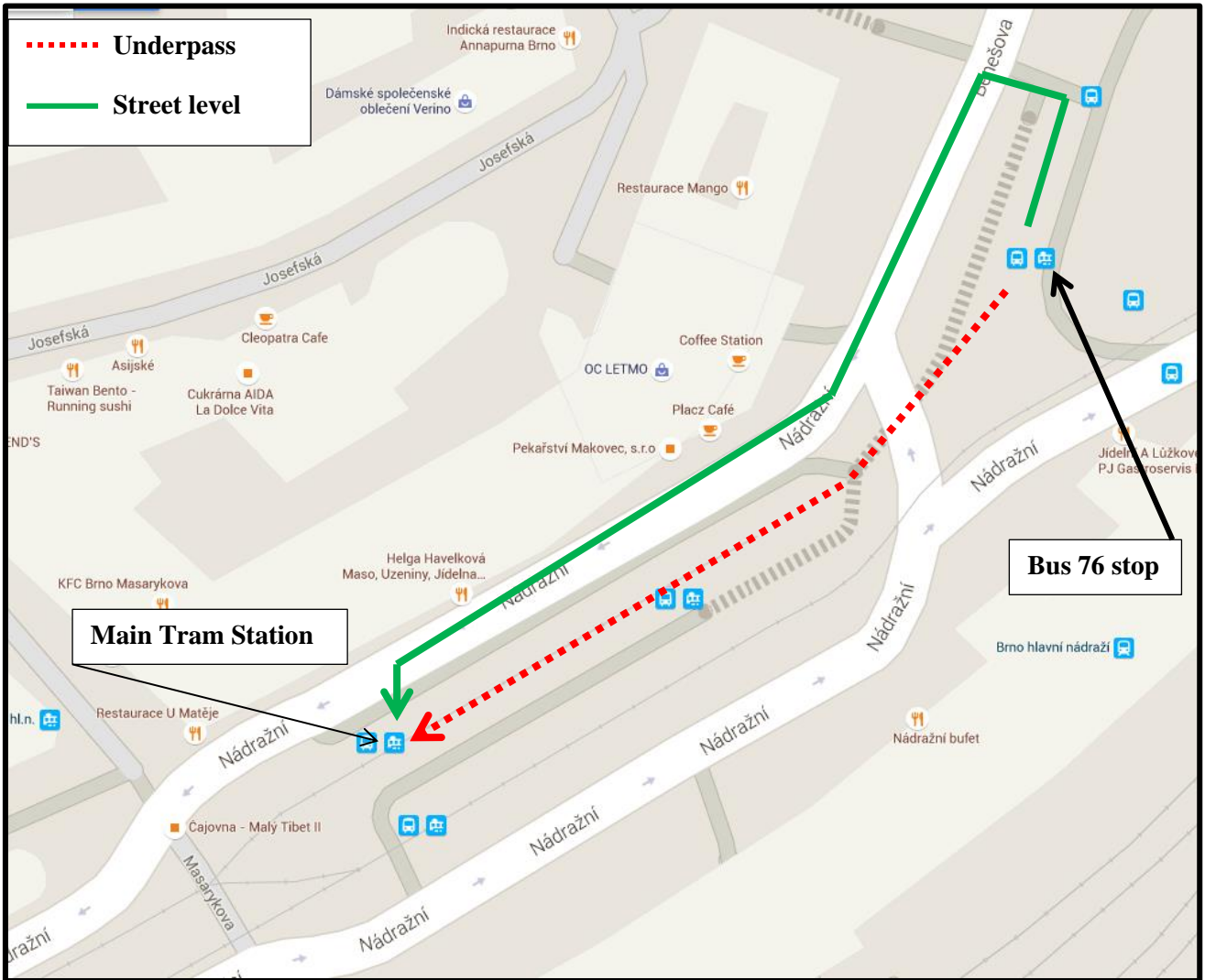


Coming to Brno by plane (Brno Airport) – from the “Hlavní nádraží” stop

Public Transport – by tram from the Main Tram Station:

- a) If you have **small, easy to carry luggage**: from the “*Hlavní nádraží*/ Main Station” bus stop **(1)** continue straight ahead through the pedestrian underpass and then up the stairway **(2)**. There are three stairways leading out of the subway: take the middle one (tram number 12) or the one to the right (tram number 4). Tram stop (in both cases) is located at the farther end of the platform. Trams 12 and 4 take slightly different routes but there is no difference in travel time or destination. Tram number 12 goes around the inner city while tram number 4 goes straight through it. Continue to *Česká* stop **(6)** (fourth stop on the route in both cases).

 - b) If you have **larger or heavy luggage**: from the bus stop, take the stairs (on the other side to the underpass entrance) and cross the road **(3)**. Then head left towards and around the white modern-looking building of the shopping mall “Letmo” **(4)**. The Main Tram station (as well as the grey building of the Main Train Station) will be to your left **(5)**. Reaching the Main Tram Station, take tram number 4 (platform closest to you) or tram number 12 (middle platform). Trams 12 and 4 take slightly different routes but there is no difference in travel time and destination. Tram number 12 goes around the inner city while tram number 4 goes straight through it. Continue to *Česká* stop **(6)** (fourth stop on the route in both cases).
- 15 minute **ticket** for 20 CZK comfortably covers the entire journey. Tickets can be bought in yellow vending machines or in newsstands.



1



2



3



4

