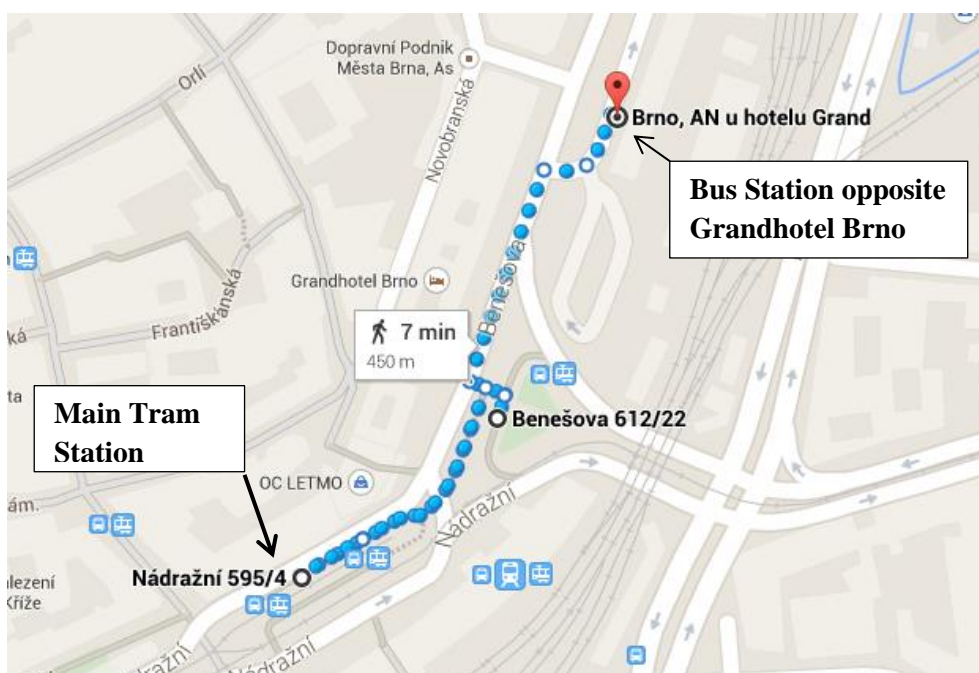


Coming to Brno by bus – bus station opposite Grandhotel Brno:

Taxi: taxis are stationed at the end of the platform. The drive to the hotel should take approximately 10 minutes and costs approximately 100 CZK / € 4.

Public transport – by tram from the Main Tram Station: From the bus station (1), head to the general direction of the Grand Hotel Brno (which is located on the other side of the road at *Benešova* street) (2) – but not to it. Continue straight ahead until reaching pedestrian underpass / subway (3, 4). If you have

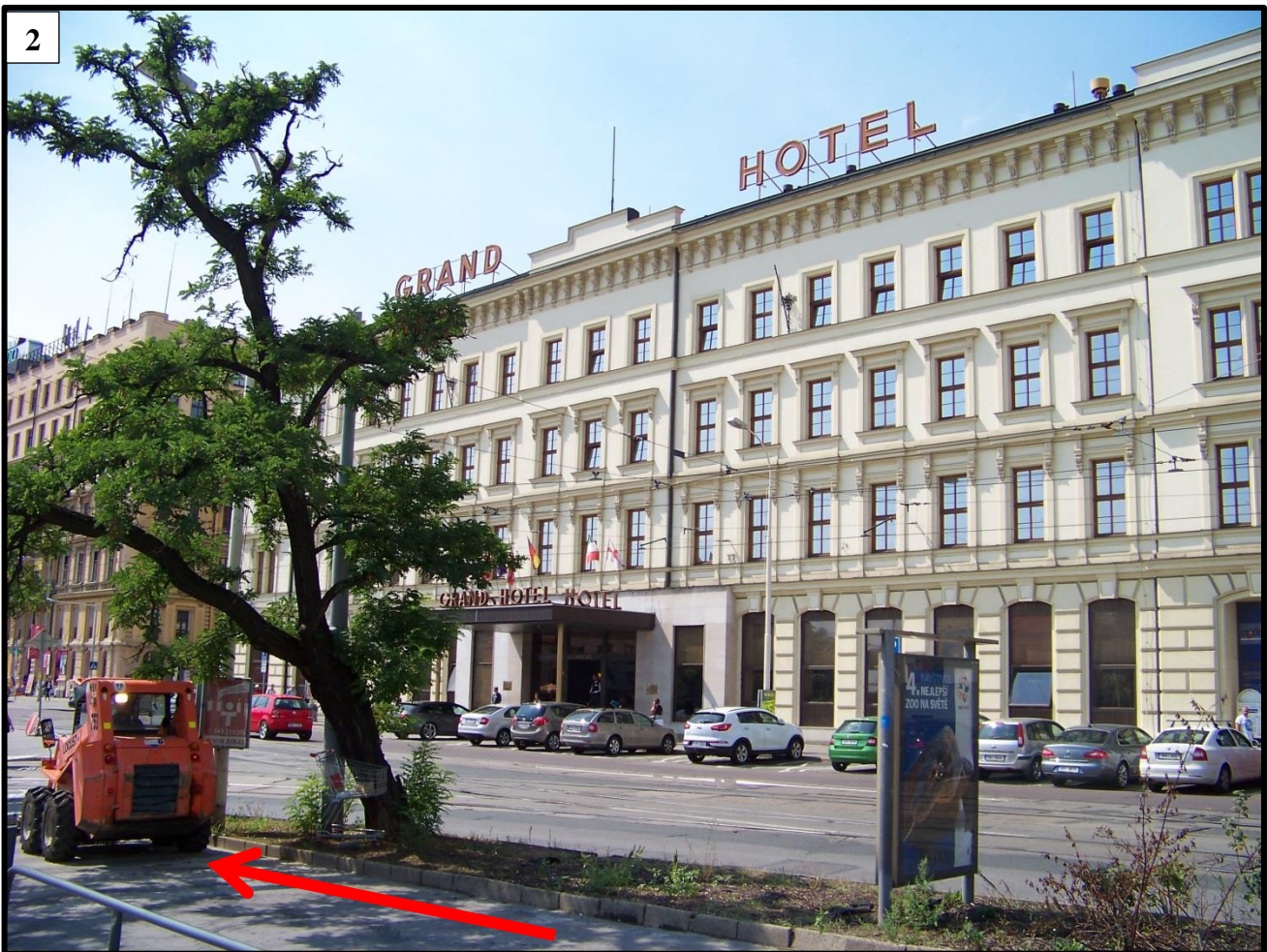
- a) **small, easy to carry luggage**, continue straight ahead through the underpass (5) and then up the stairway (6). There are three stairways leading out of the subway: take the middle one (tram number 12) or the one to the right (tram number 4). Tram stop (in both cases) is located at the farther end of the platform. Trams 12 and 4 take slightly different routes but there is no difference in travel time or destination. Tram number 12 goes around the inner city while tram number 4 goes straight through it. Continue to *Česká* stop (9) (fourth stop on the route in both cases).
- b) **larger or heavy luggage**, do not use the underpass (as there are no escalators and the luggage needs to be carried up a long stairway) but rather cross the road and continue left towards and around the white modern-looking building of the shopping mall “Letmo” (7). The Main Tram station (as well as the grey building of the Main Train Station) will be to your left (8). Reaching the Main Tram Station, take tram number 4 (platform closest to you) or tram number 12 (middle platform). Trams 12 and 4 take slightly different routes but there is no difference in travel time or destination. Tram number 12 goes around the inner city while tram number 4 goes straight through it. Continue to *Česká* stop (9) (fourth stop on the route in both cases).
- c) 15 minute **ticket** for 20 CZK comfortably covers the entire journey. Tickets can be bought in yellow vending machines or in newsstands.



1



2



3



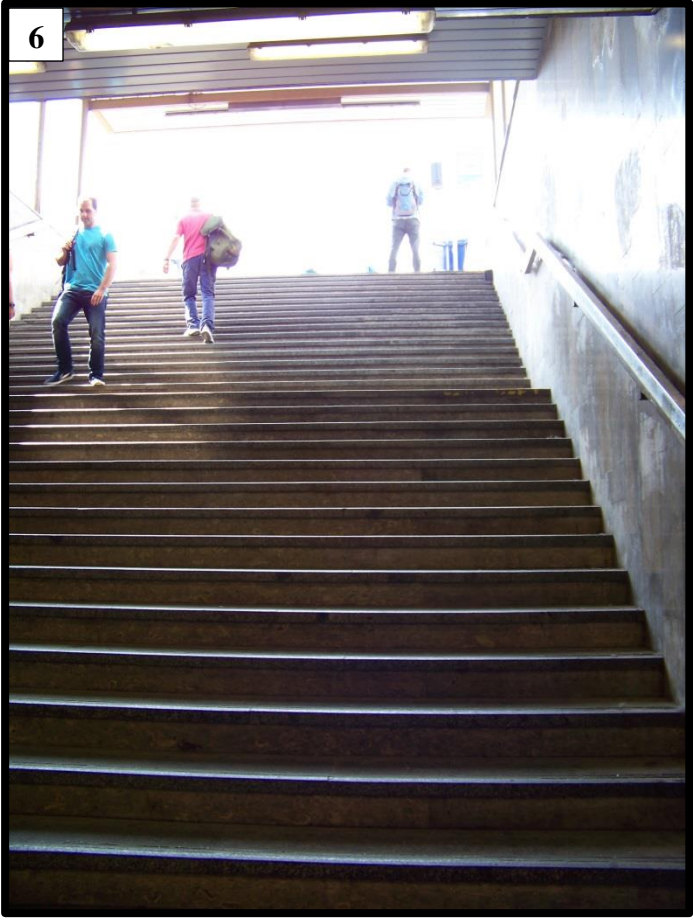
4

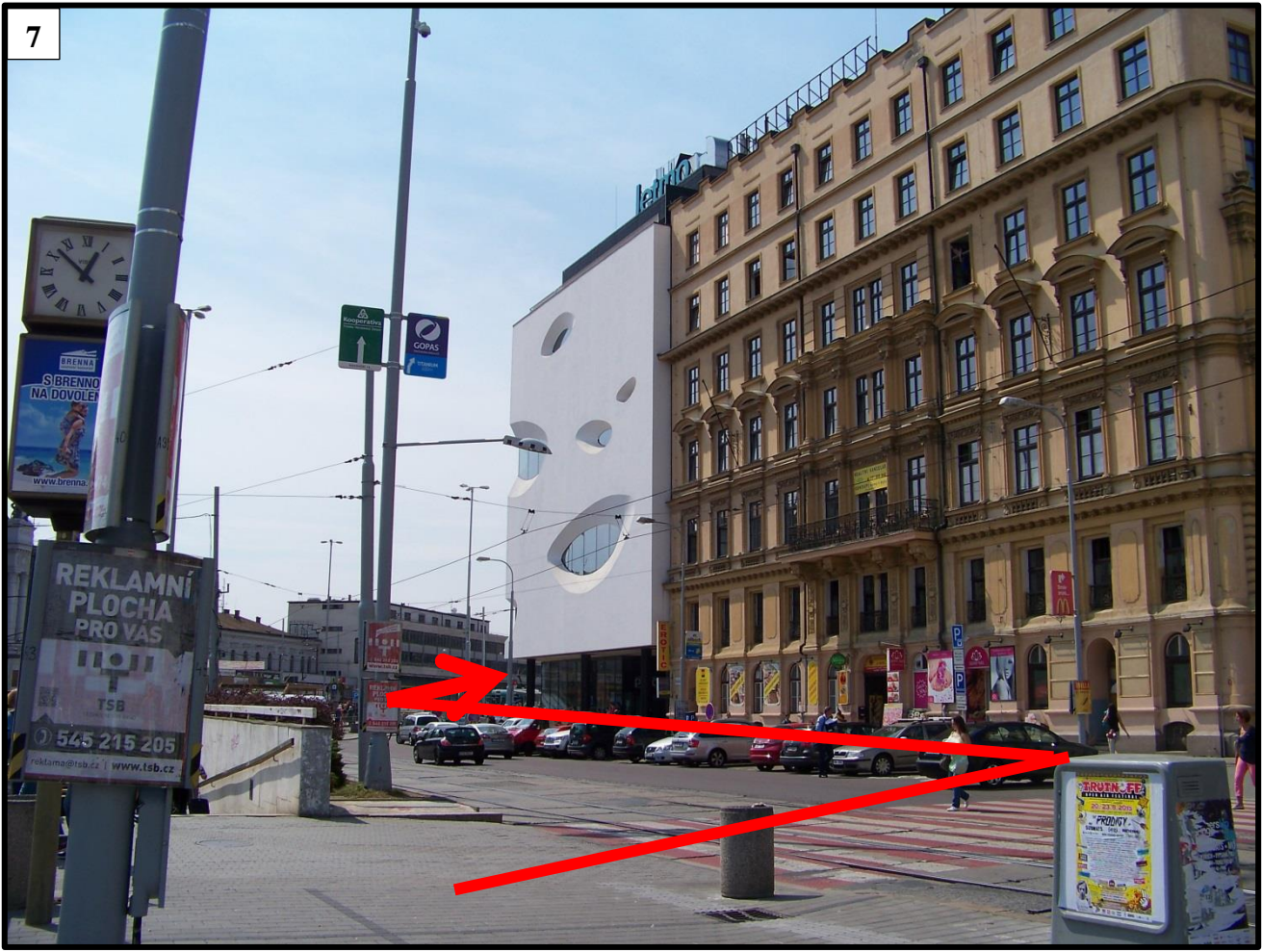


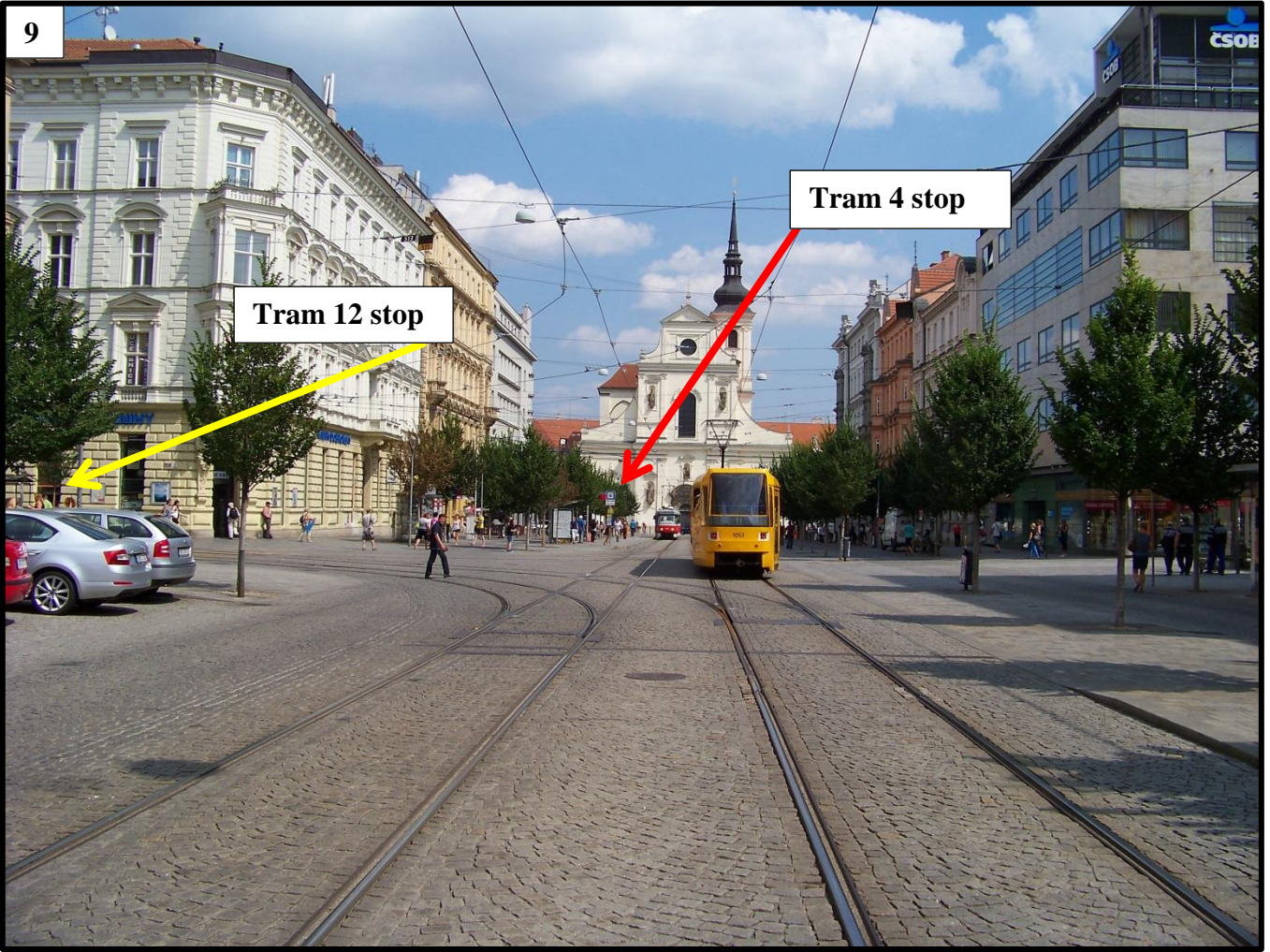
5



6







Tram 12 stop

Tram 4 stop